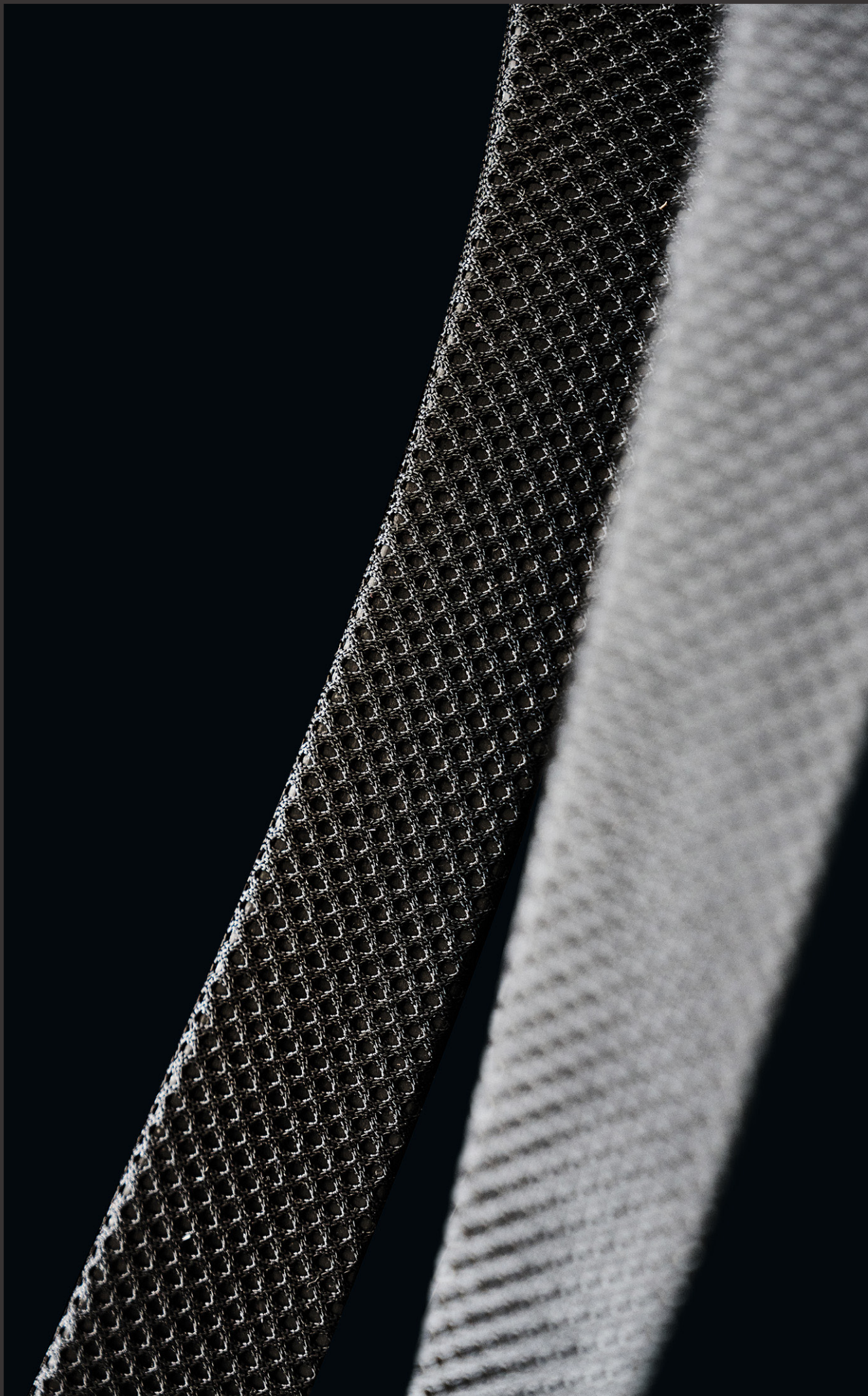


TESSUTI



italiansedioliti®



Cat. 1

ALBA



AB 6



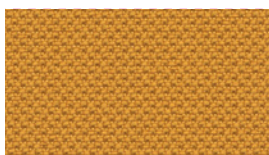
Composizione - *Composition* - Composition:

100% Poliestere - 100% Polyester - 100% Polyester

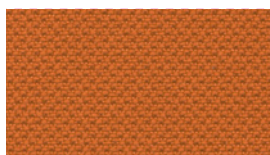
Peso - *Weight* - Poids: **320 g/m²**

Resistenza all'abrasione (cicli) - *Abrasion resistance (rubs)*
Résistance à l'abrasion (tours):

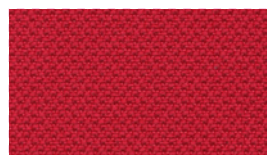
100.000 Martindale



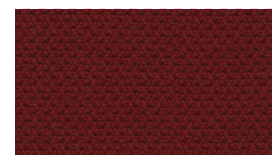
AB 7



AB 8



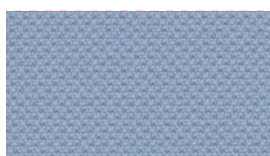
AB 13



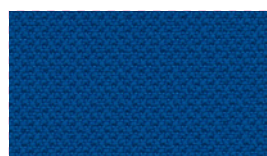
AB 14



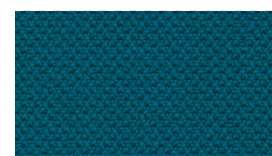
AB 9



AB 5



AB 4



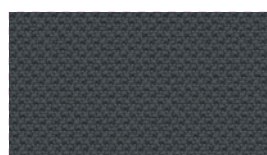
AB 3



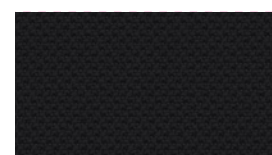
AB 10



AB 11



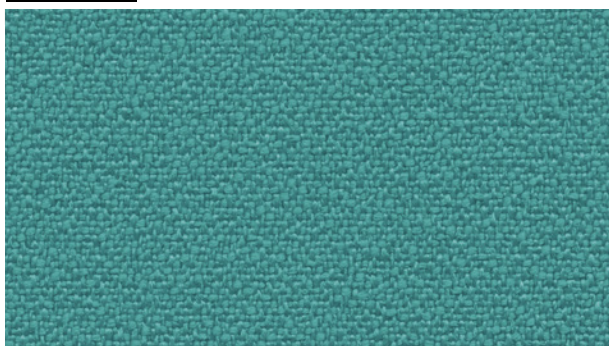
AB 12



AB 1

Cat. 1

BONDAY



BD 6



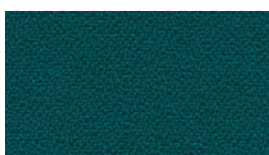
Composizione - *Composition* - Composition:

100% Poliestere - 100% Polyester - 100% Polyester

Peso - *Weight* - Poids: **250 g/m²**

Resistenza all'abrasione (cicli) - *Abrasion resistance (rubs)*
Résistance à l'abrasion (tours):

150.000 Martindale



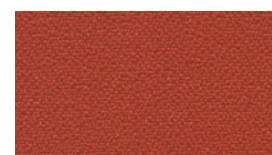
BD 10



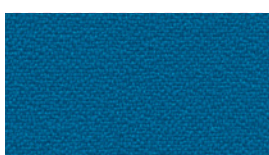
BD 9



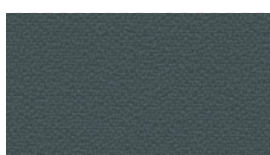
BD 11



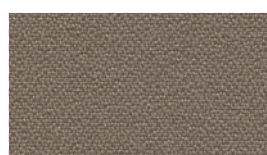
BD 3



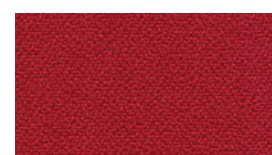
BD 13



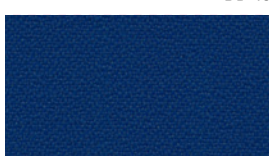
BD 12



BD 5



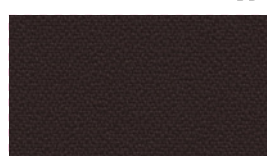
BD 2



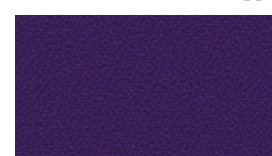
BD 4



BD 1



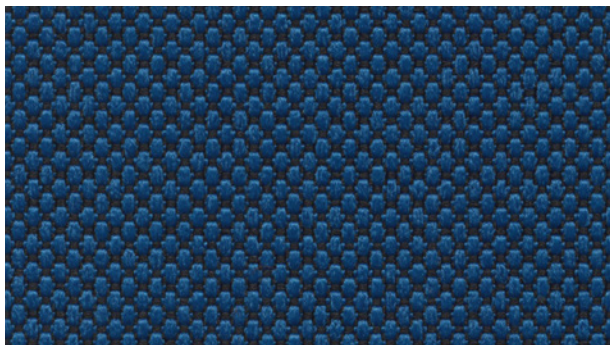
BD 8



BD 7

Cat. 2

BERLIN



BL 14



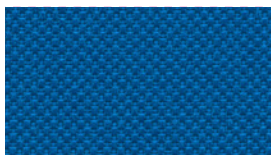
Composizione - Composition - Composition:

100% Poliestere FR - 100% Polyester FR - 100% Polyester FR

Peso - Weight - Poids: **400 g/m²**

Resistenza all'abrasione (cicli) - Abrasion resistance (rubs)
Résistance à l'abrasion (tours):

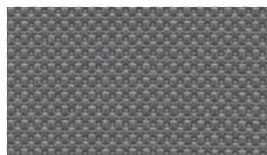
80.000 Martindale



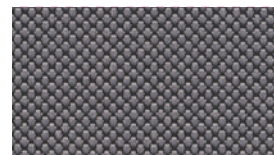
BL 13



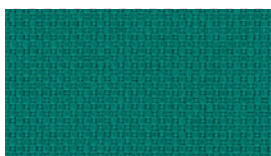
BL 4



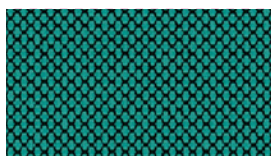
BL 9



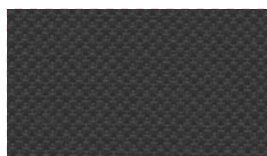
BL 15



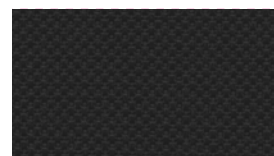
BL 7



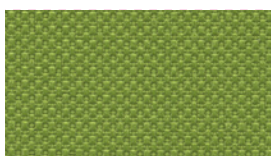
BL 17



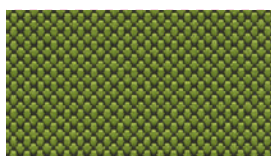
BL 12



BL 10



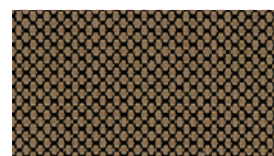
BL 6



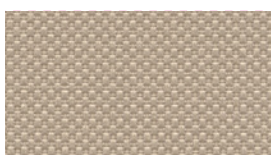
BL 16



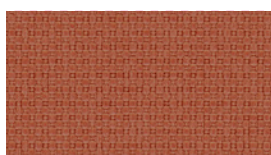
BL 5



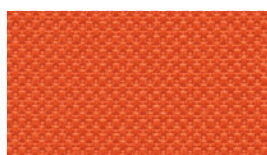
BL 8



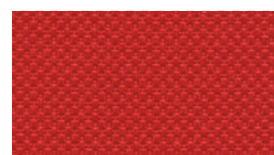
BL 11



BL 22



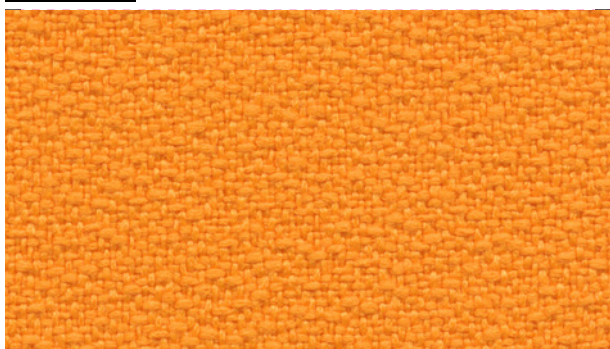
BL 3



BL 1

Cat. 2

KING



KN 10



Composizione - Composition - Composition:

100% Poliestere Trevira CS - 100% Polyester Trevira CS
100% Polyester Trevira CS

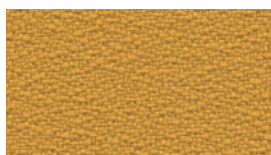
Peso - Weight - Poids: **300 g/m²**

Resistenza all'abrasione (cicli) - Abrasion resistance (rubs)
Résistance à l'abrasion (tours):

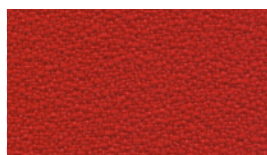
100.000 Martindale



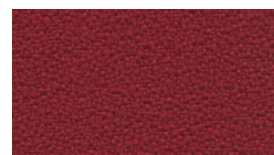
KN 20



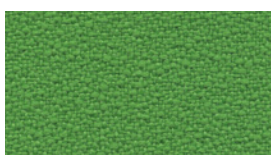
KN 12



KN 9



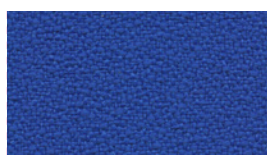
KN 4



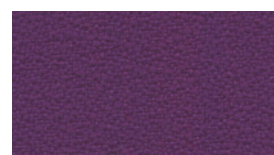
KN 25



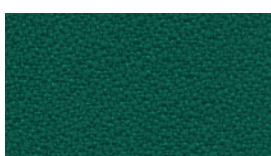
KN 37



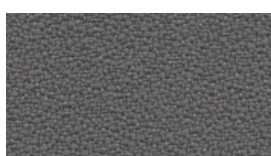
KN 3



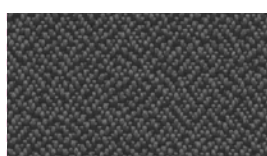
KN 23



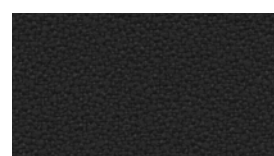
KN 5



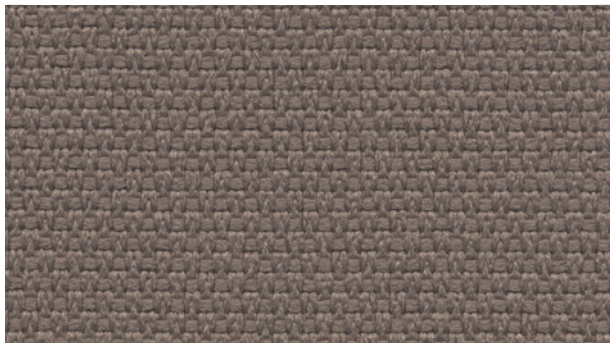
KN 18



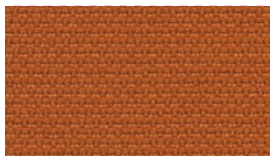
KN 22



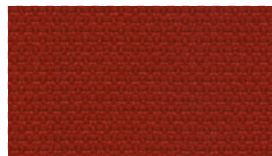
KN 1

Cat. 2**MINI**

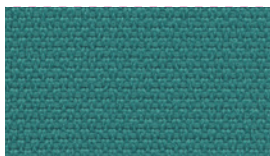
MN 11



MN 2



MN 1



MN 7



MN 8



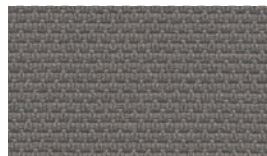
Composizione - Composition - Composition:

100% Poliestere Trevira CS - 100% Polyester Trevira CS
100% Polyester Trevira CS

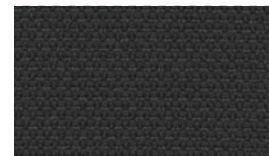
Peso - Weight - Poids: **340 g/m²**

Resistenza all'abrasione (cicli) - Abrasion resistance (rubs)
 Résistance à l'abrasion (tours):

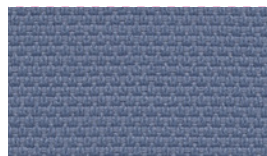
100.000 Martindale



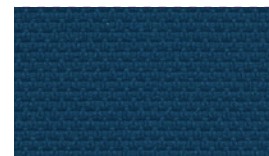
MN 9



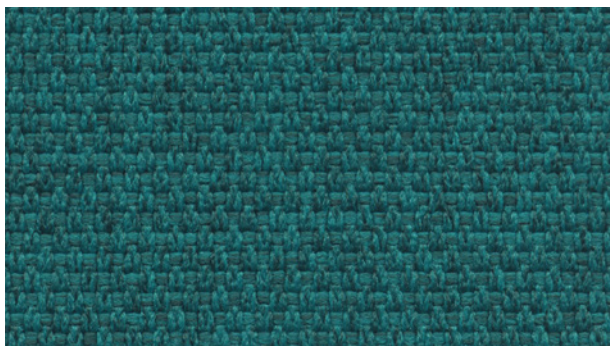
MN 10



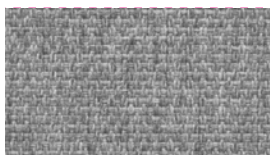
MN 3



MN 4

Cat. 3**MINI MELANGE**

MLG 6



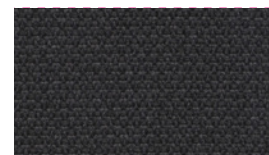
MLG 9



MLG 11



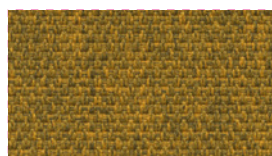
MLG 8



MLG 10



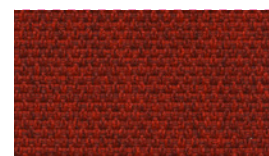
MLG 12



MLG 13



MLG 2



MLG 1



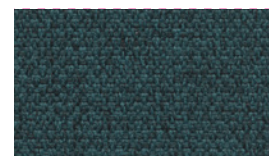
MLG 3



MLG 4



MLG 5



MLG 7



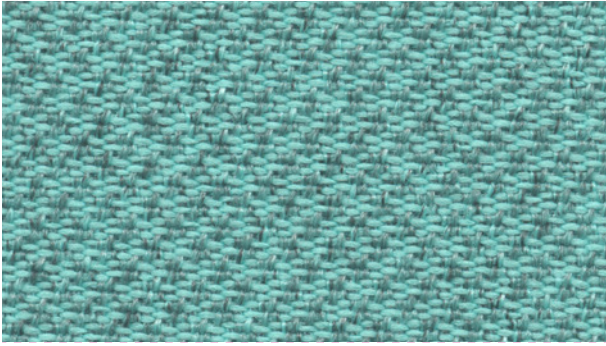
Composizione - Composition - Composition:

100% Poliestere Trevira CS - 100% Polyester Trevira CS
100% Polyester Trevira CS

Peso - Weight - Poids: **340 g/m²**

Resistenza all'abrasione (cicli) - Abrasion resistance (rubs)
 Résistance à l'abrasion (tours):

100.000 Martindale

Cat. 3**SEALIFE**

SF 3



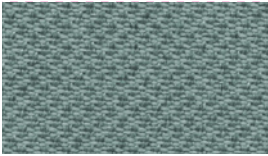
Composizione - *Composition* - Composition:

100% Poliestere riciclato - 100% Recycled Polyester
100% Polyester recyclé

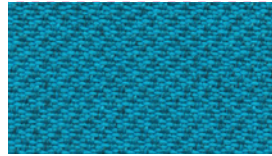
Peso - *Weight* - Poids: **330 g/m²**

Resistenza all'abrasione (cicli) - *Abrasion resistance (rubs)*
 Résistance à l'abrasion (tours):

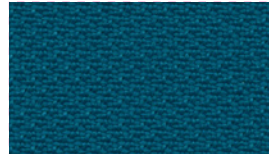
100.000 Martindale



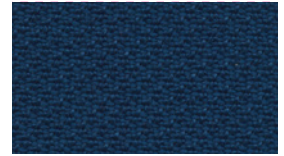
SF 7



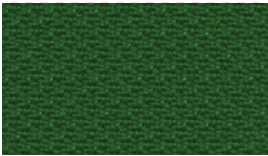
SF 4



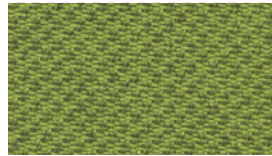
SF 5



SF 8



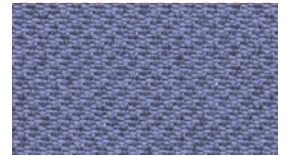
SF 10



SF 11



SF 13



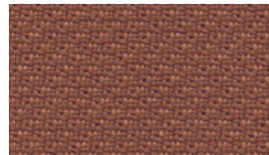
SF 6



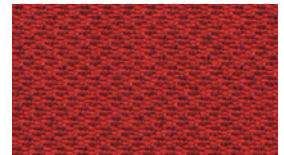
SF 9



SF 12



SF 2



SF 1

Cat. 4**LANA**

LN 1



Composizione - *Composition* - Composition:

100% Pura lana vergine - 100% Pure wool - 100% Pure laine

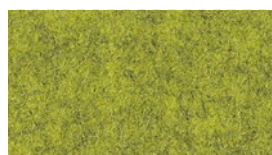
Peso - *Weight* - Poids: **410 g/m²**

Resistenza all'abrasione (cicli) - *Abrasion resistance (rubs)*
 Résistance à l'abrasion (tours):

50.000 Martindale



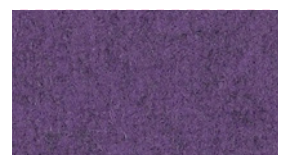
LN 5



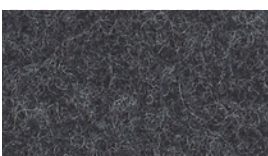
LN 6



LN 7



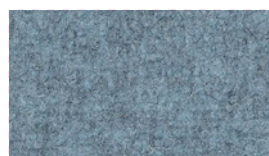
LN 8



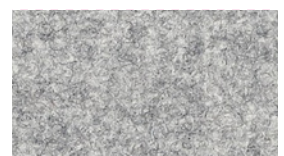
LN 10



LN 4



LN 3



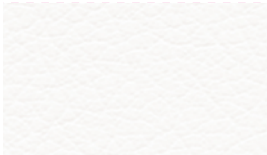
LN 9

Cat. 2**INCA**

IC 10



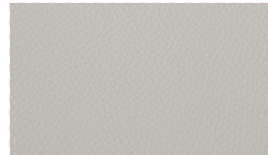
Composizione - Composition - Composition:

88% PVC - 8% PES - 4% COTPeso - Weight - Poids: **650 g/m²**Resistenza all'abrasione (cicli) - Abrasion resistance (rubs)
Résistance à l'abrasion (tours):**200.000 Martindale**

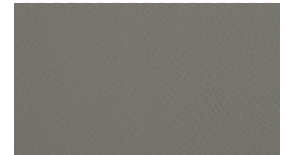
IC 6



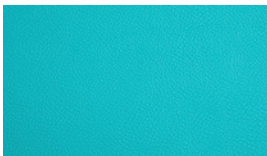
IC 16



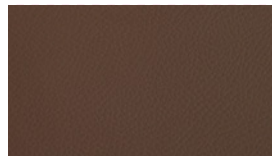
IC 3



IC 2



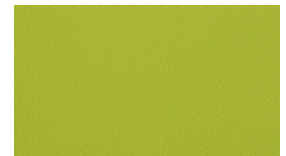
IC 17



IC 8



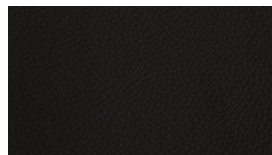
IC 9



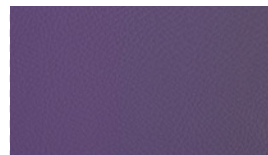
IC 20



IC 4



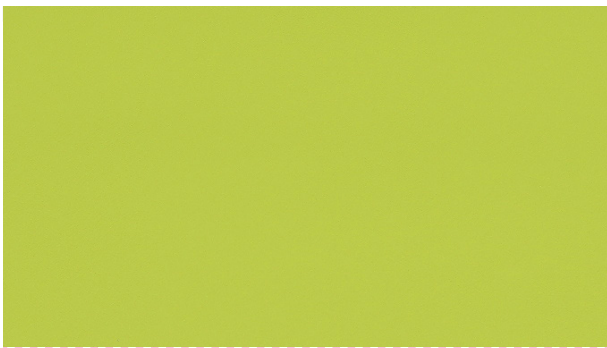
IC 1



IC 23



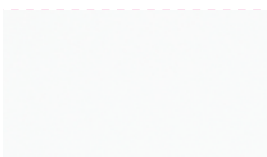
IC 5

Cat. 3**AUREA MOOD**

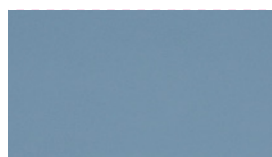
AM 14



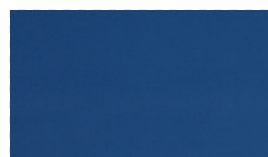
Composizione - Composition - Composition:

72% PVC - 25% COT - 3% PUPeso - Weight - Poids: **600 g/m²**Resistenza all'abrasione (cicli)
Abrasion resistance (rubs)
Résistance à l'abrasion (tours):**100.000 Martindale**

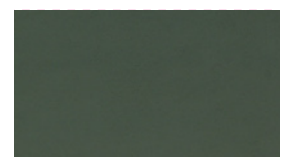
AM 1



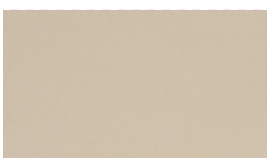
AM 23



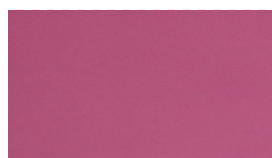
AM 24



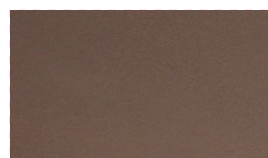
AM 16



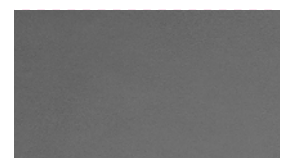
AM 4



AM 18



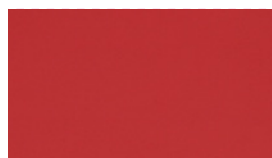
AM 27



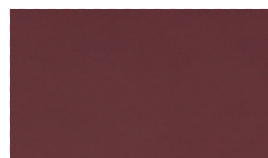
AM 28



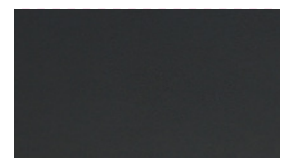
AM 9



AM 10

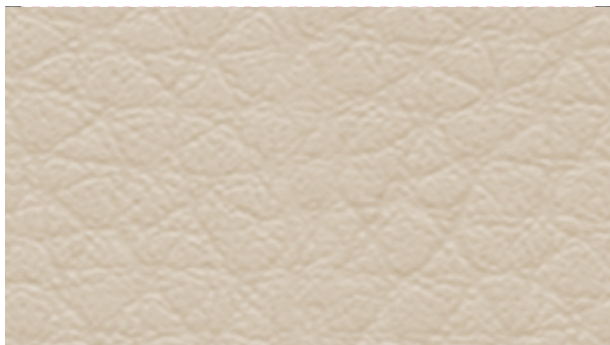


AM 11



AM 26

PELLE



PL 15



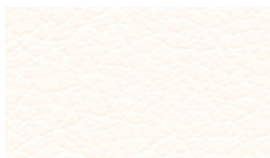
Composizione - Composition - Composition:

100% Pelle bovina smerigliata e conciata

100% Genuine leather

100% Cuir véritable

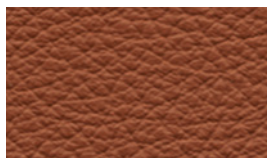
Spessore - Depth - Epaisseur: **0,9/1 mm**



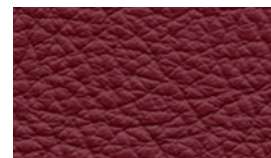
PL 6



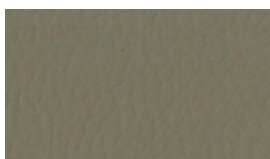
PL 10



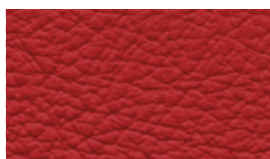
PL 7



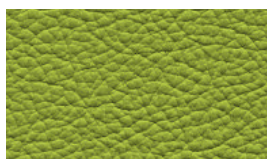
PL 4



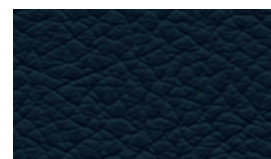
PL 16



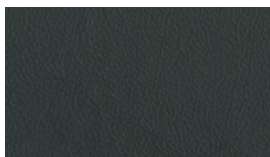
PL 9



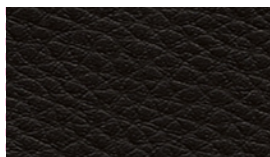
PL 20



PL 3



PL 2



PL 1



Pelle con concia ecologica e/o pelle ignifuga disponibile su richiesta. Contatta un nostro commerciale per maggiori informazioni.
Leather with ecological tanning and/or fire-resistant leather available upon request. Contact our sales representative for more information.
 Cuir avec tannage écologique et/ou cuir ignifuge disponible sur demande. Contactez notre commercial pour plus d'informations.

RETE



RT 4



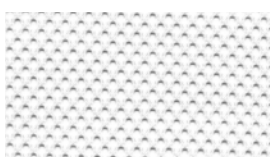
Composizione - Composition - Composition:

100% Poliestere - 100% Polyester - 100% Polyester

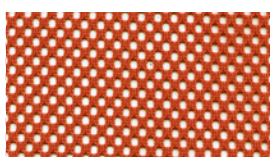
Peso - Weight - Poids: **330 g/m²**

Resistenza all'abrasione (cicli) - Abrasion resistance (rubs)
 Résistance à l'abrasion (tours):

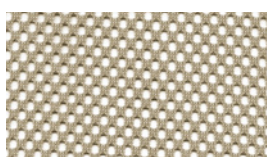
100.000 Martindale



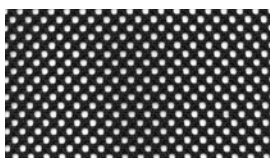
RT 2



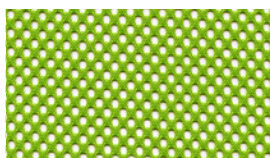
RT 5



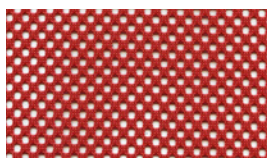
RT 9



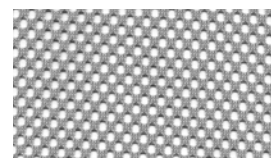
RT 1



RT 7

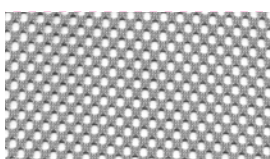


RT 6

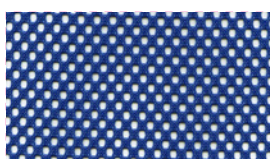


RT 3

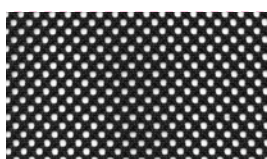
RETE IGNIFUGA



RT IGN 3



RT IGN 4



RT IGN 1



Nome tessuto <i>Fabric name</i> Nom du tissu	Resistenza al fuoco <i>Flammability</i> Classement au feu	Solidità allo sfregamento <i>Fastness to rubbing</i> Solidité au frottement EN ISO 105-X12	Solidità alla luce <i>Light fastness</i> Solidité à la lumière EN ISO 105-B02	Pilling EN ISO 12945-2
ALBA	UNI 9175 Class 1 IM EN 1021-1 & 2 BS Crib 5 BS 7176 Class Medium Hazard California TB117	4/5 (scala dei grigi)	6 (scala dei blu)	5
BONDAY	UNI 9175 Class 1 IM EN 1021-1 & 2 BS 5852 Crib 5 BS 7176 Medium Hazard NF D 60013 AM 18 California TB117:2013	4/5 (scala dei grigi)	6 (scala dei blu)	5
BERLIN	UNI 9174 - 8456 Class C1 UNI 9175 Class 1 IM DIN 4102 Class B1 NF 92501-7 Class M1 NF D 60013 Class AM18 EN 1021-1 & 2 BS Crib 5 BS 7176 Class Medium Hazard EN 13773 Class 1 OENORM 3800-1 Class B1,Q1,TR1 California TB117 USA NFPA 701 USA NFPA 260	4/5 (scala dei grigi)	6 (scala dei blu)	5
KING	UNI 9174 - 8456 Class C1 UNI 9175 Class 1 IM DIN 4102 Class B1 NF 92501-7 Class M1 NF D 60013 Class AM18 EN 1021-1 & 2 BS Crib 5 BS 7176 Class Medium Hazard EN 13773 Class 1 OENORM 3800-1 Class B1,Q1,TR1 California TB117 USA NFPA 701 USA NFPA 260 IMO Part 8 Upholstery	4/5 (scala dei grigi)	6 (scala dei blu)	5
MINI & MINI MELANGE	UNI 9174 - 8456 Class C1 UNI 9175 Class 1 IM DIN 4102 Class B1 NF 92501-7 Class M1 NF D 60013 Class AM18 EN 1021-1 & 2 BS Crib 5 BS 7176 Class Medium Hazard EN 13773 Class 1 OENORM 3800-1 Class B1,Q1,TR1 California TB117 USA NFPA 701 USA NFPA 260 IMO Part 8 Upholstery	4/5 (scala dei grigi)	6 (scala dei blu)	5
SEALIFE	UNI 9175 Class 1 IM EN 1021-1 & 2 BS 7176 Class Low Hazard California TB 117:2013	4/5 (scala dei grigi)	6 (scala dei blu)	5
LANA	1 IM UNI 9175 EN 1021-1 & 2:2006 California TB 117:2013 IMO NPFA260-2019 EN 13772:2011 BS5852-1:1979	4/5 (scala dei grigi)	5 (scala dei blu)	5
INCA	Classe 1IM - UNI 9175 California TB 117:2013 - FMVSS 302 UNI EN 1021-1 & 2:2014 BS 5852 : 2006 source 0 & source 1	4 (scala dei grigi)	4/5 (scala dei grigi) EN ISO 4892-2 B1&B2	/
AUREA MOOD	UNI 9175 classe 1IM EN 1021-1 & 2 BS 5852-1 cigarette test BS 5852-1 match test California TB 117:2013 IMO res. A.652(16)	5 (scala dei grigi)	6/7 (scala dei blu)	/
PELLE IGNIFUGA	UNI 9175:2010 1IM UNI 9175:1987 UNI 9175_FA:1994 3IM	4 (scala dei grigi)	6 (scala dei blu)	/
RETE IGNIFUGA	UNI 8457(1987)-UNI 8457/A1(1996) RAPP.PROVA CL.1 SEDIA RIGIDA-N.524.0 UNO 180/8 UNI 9174(1987)-UNI 9174/A1(1996) RAPP.PROVA CL.1 SEDIA RIGIDA-N.524.0 UNO 180/8 EN 1021 Part 1-2 using a CM Foam 35 Kg/cu.m.	4/5 (scala dei grigi)	6 (scala dei blu)	5





I colori della cartella tessuti fotografica possono differire dalla cartella tessuti reali. Si consiglia di verificare la tonalità desiderata.

The colors of the photographic fabric folder may differ from the actual fabric samples. It is recommended to verify the desired shade.

Les couleurs du nuancier de tissus photographique peuvent différer des échantillons de tissus réels. Il est conseillé de vérifier la teinte souhaitée.

italiansedioliti

SEDE EMILIA ROMAGNA - LEGALE & OPERATIVA

Via Luciano Lama, 93 - 47035 Gambettola (FC), Italy

SEDE LOMBARDIA - OPERATIVA

Via Leone Tolstoj, 37 - 20098 San Giuliano Milanese (MI), Italy

Tel. +39 0543 096 616
info@italiansedioliti.it